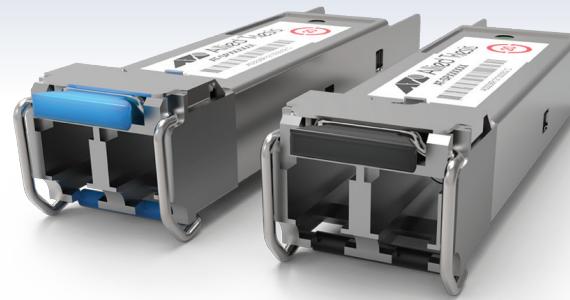


SFP Compatibility



Allied Telesis, Inc. is a world leader in fiber connectivity with network adapters, media converters and optics. With over 30 years of experience and a federally inspected secure supply chain, quality and reliability is our main focus. Many of our optics are Trade Act compliant (manufactured in a TAA compliant country). Built to industry standards, our optics are ready for any network.

Companies and organizations are now seeking cost-effective alternatives to Cisco-branded Small Form Pluggable (SFP) transceivers.

It appears that Cisco switches do not support Allied Telesis SFPs. If you try using any third-party SFPs to connect your network backbone, you'll quickly stumble across an error.

When an SFP is inserted into a Cisco switch's SFP port, the switch immediately reads a number of values from the SFP. If it doesn't like what it sees, it displays an error message, leading you to believe that the switch can't work with third-party SFPs. Allied Telesis does have a solution for this error.

All SFP modules contain a number of recorded values in their EEPROM. These values include:

- ▶ Vendor Name
- ▶ Vendor ID
- ▶ Serial Number
- ▶ Security Code
- ▶ CRC

How to enable the Cisco switch to use Allied Telesis SFPs

Despite the displayed error, there are two undocumented commands which you can use to enable Cisco switches to use the SFP port, and the Allied Telesis SFPs:

- ▶ First: **#service unsupported-transceiver**
- ▶ Second: **#no errdisable detect cause gbic-invalid**

Some Cisco equipment may require you to enter these commands as interface commands, for example after: **#interface gi0/0/1**.

Easy five step process:

Step 1: Command: **#service unsupported-transceiver**

Step 2: Command: **#no errdisable detect cause gbic-invalid**

Step 3: Remove the SFP, and then on the interface, enter the command: **#shutdown**

Step 4: Command: **#no shutdown**

Step 5: Insert Allied Telesis SFP, and connect to the network

That's it! Congratulations, you can now use Allied Telesis SFPs in your Cisco switches.

Cisco has multiple software versions on multiple product lines. There is no guarantee that these commands will be present or function properly on all software versions or products.